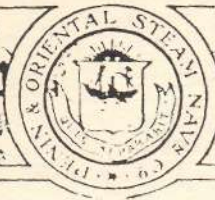


The P. & O.

MAIL LINE.

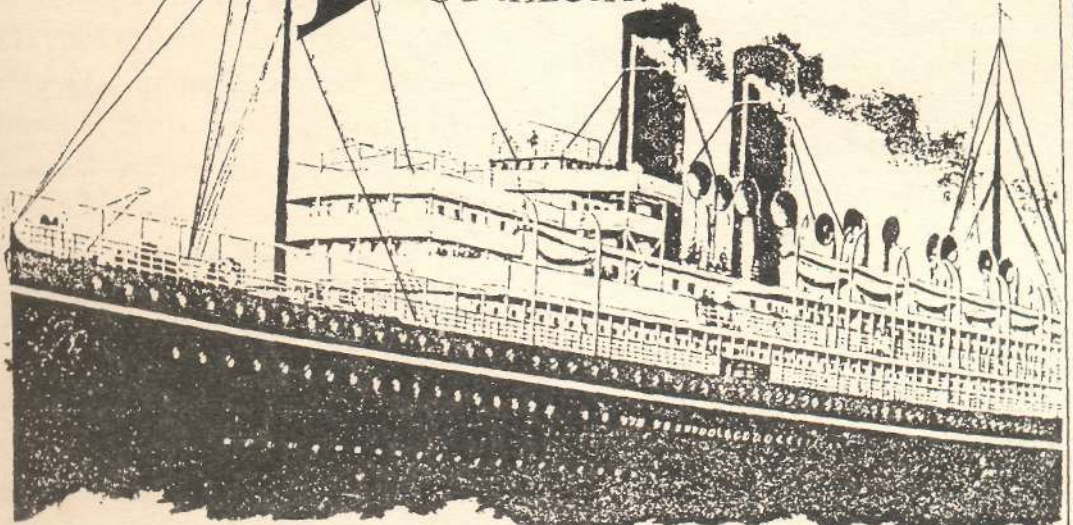


MALDIVA  
 MEDINA  
 MENHATA  
 MEXICO  
 MUMBAI  
 PANAMA  
 PENANG  
 PLYMOUTH  
 RANGOON  
 SINGAPORE  
 SOERABAYA  
 SUEZ  
 SYDNEY  
 TIENTSIN  
 YOKOHAMA

CALIFORNIA  
 ASSAYI  
 HIMALAYA  
 SHIMLA  
 SOERABAYA  
 SINGAPORE  
 NYANZA  
 NILE  
 SUEZ  
 SYDNEY  
 TIENTSIN  
 YOKOHAMA  
 SINGAPORE  
 SUEZ  
 SYDNEY  
 TIENTSIN  
 YOKOHAMA

# P & O

## S.S. MEDINA & MALOJA.



The P. & O. S. N. Company's Mail Steamers leave Bombay every Saturday conveying Passengers for Britain, Marseilles, Plymouth and London and Intermediate Ports; also every fortnight conveying Passengers for China, Japan and Australia. Full particulars can be obtained at the Company's Offices, Rangoon Row, Bombay.

